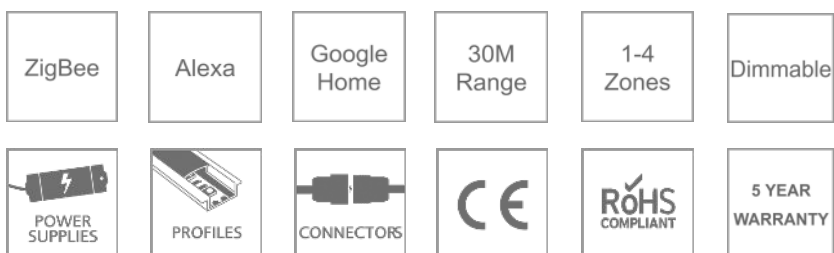


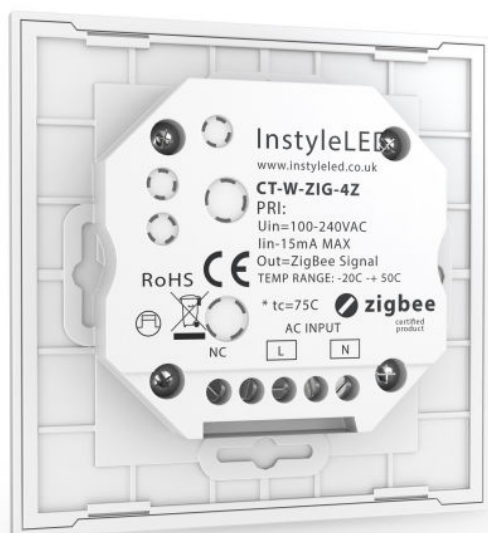
Zigbee Wireless Wall Controller (4 Zone)

SPECIFICATION SHEET



■ PRODUCT SPECIFICATION

Connectivity	ZigBee 3.0 protocol
Input Voltage	100v - 240v AC
Dimmable	Yes : 0.1% - 100%
Independent Zones	1-4
Wireless Range	Up to 30 metres
Colour	White
Operation Frequency	2.4GHz
Operatin Temperature	0-40°C
Relative Humidity	8% to 80%
Warranty	5 years
Certificated	CE + RoHS
Dimensions (mm)	86 x 86 x 29.1mm



Zigbee Wireless Wall Controller (4 Zone)

SPECIFICATION SHEET

■ PRODUCT DETAILS

Product name	Zigbee Wireless Wall Controller
Product code	CT-ZB-WALL-4
Description	Zigbee Wireless Wall Controller (4 Zone)

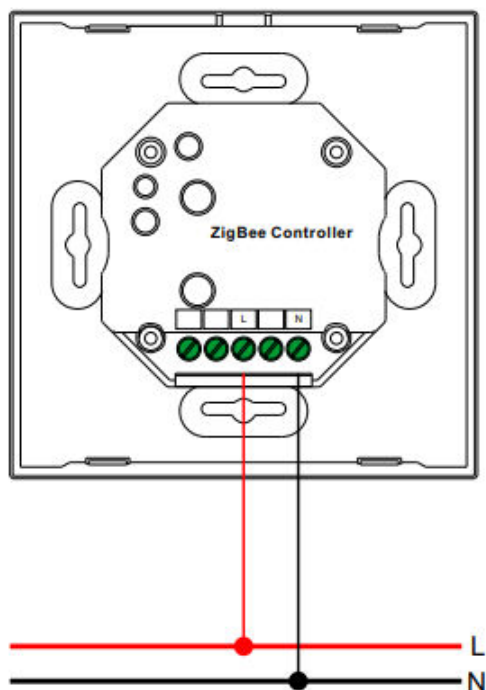
■ PRODUCT Features

- Commercial Grade ZigBee LED Receiver
- Uses latest ZIGBEE 3 protocols
- Works up to 30m away from receiver
- Works with all ZIGBEE devices & hubs
- Extends ZIGBEE network
- Can control RGB and RGBW
- Can be set to 1, 2, 3, or 4 Independent Zones
- Works with Alexa / Google Home

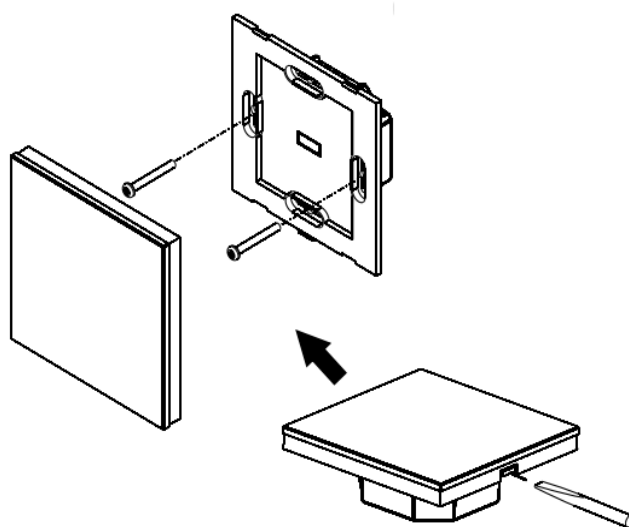
■ PRODUCT DESCRIPTION

The wireless wall controller, you can control up to four zones of RGB/RGBW LED tape from a single unit. Boasting a sleek glass finish and an easy-to-use touch wheel which enables you to select any colour/shade, each channel on this multizone wall controller can be linked to as many wireless receivers as you require. The unit works with RGB and RGBW LED tape, and can work wirelessly via ZigBee to a range of 30m

■ Wiring Diagram



■ Installation Diagram





■ Adding A Wall Controller to Alexa (Hue Bridge)

Hue Bridge Instructions (step 1)

1. Connect your RGBW Wall Controller to the mains AC power, as shown in the controller's User Manual.
2. Check that your LED Strip Lights are turned on.
3. Open the Philips Hue App. Select "Light Setup" → "Add Light" → "Search".
4. On the RGBW Wall Controller, press & hold down the central 'Power' button until the Blue LED indicator comes on.
5. Now press the 'R' button on the Wall Controller (**DO NOT HOLD DOWN**), The Blue LED indicator will start to flash.
6. When the RGBW Wall Controller has paired successfully with your Philips Hue system, the Blue LED indicator will flash quickly 5 times. (**The Wall Controller will NOT show on the App**)

Zigbee Receiver instruction (step 2)

7. On your Zigbee Receiver, connected to your LED Strip Lights, press the black 'Prog' button 3 times (**DO NOT HOLD DOWN**). The LED Strips Lights will start to flash slowly.
8. Check that your RGBW Wall Controller is not powered up (no Blue LED indicator showing). Now choose and press the Lighting Zone number to which you wish to connect your LED Strip Lights (1-4). (**DO NOT HOLD DOWN**)
9. On the RGBW Wall Controller, press & hold down the central 'Power' button until the Red LED indicator comes on.
10. Immediately press the 'B' button on the Wall Controller (**DO NOT HOLD DOWN**).
11. The Blue LED indicator will flash quickly 4 times (Lights will flash twice) to show it has successfully connected to the Zigbee Receiver.

Your system is now fully set up. You can control your lighting using the Philips Hue App, Amazon Alexa App, Wall Controller and your Amazon Alexa Device.

■ Factory Reset Receiver

